

3D Scanner Holder - All Parts

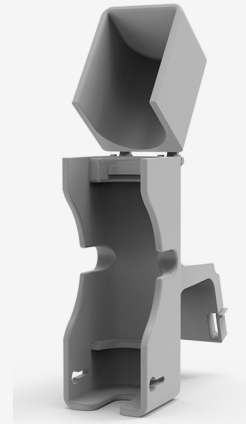
Complete Assembly • Parts & Materials



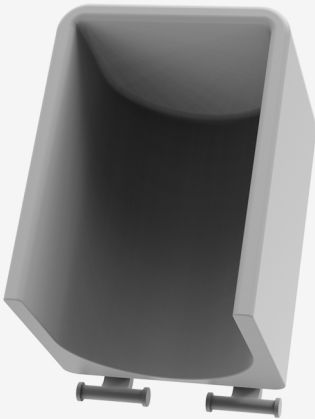
Mounting Plate (A)
Material: PLA+ or PETG



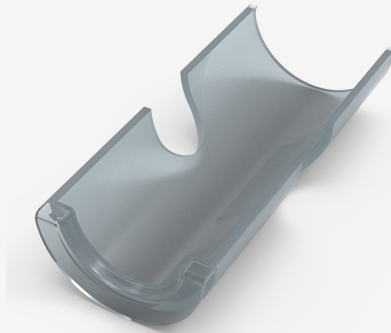
Cradle Lower (C2)
Material: PETG



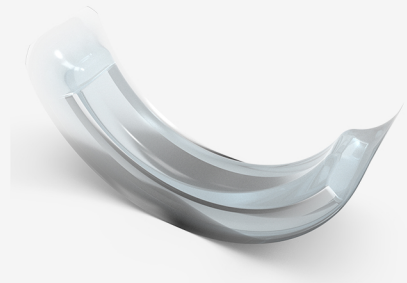
Cradle Assembly (C)
Material: PETG



Cradle Upper (C1)
Material: PETG



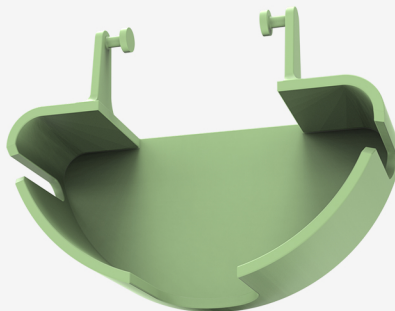
Soft Down Pad
Material: TPU 85A



Soft Up Ring
Material: TPU 85A



Protective Cover
Material: PETG or TPU



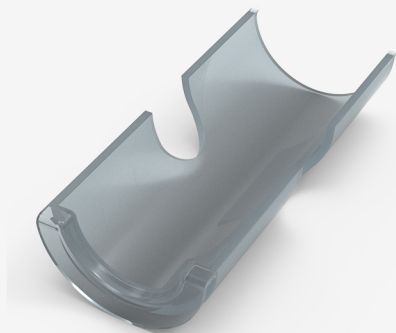
Cable Holder
Material: PETG



Complete Assembly
All Parts Mounted

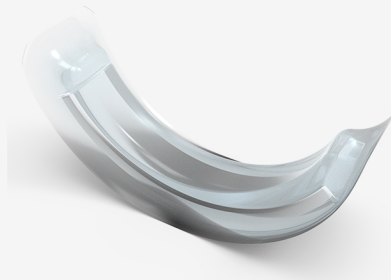
Soft Contact Pads (TPU) Scanner Protection Inserts

Internal Cradle Liners • Anti-Scratch Protection • TPU 85A Material



Bottom Insert (Soft Down)

TPU 85A • Flexible cushion



Top Ring (Soft Up)

TPU 85A • Soft contact ring

Technical Specifications

| | | | |
|---------------------|------------|------------------------|---------------------------|
| Material: | TPU 85A | Infill: | 20% gyroid |
| Hardness: | 85 Shore A | Layer Height: | 0.15mm |
| Temperature: | 220°C | Print Speed: | 25 mm/s |
| Bed Temp: | 40°C | Mount Location: | Inside C2 (bottom cradle) |

Component Details

Soft Down (Bottom Cushion): Flexible pad that lines the inner bottom of cradle C2 - Cushions scanner base

Soft Up (Top Ring): Soft retaining ring that mounts inside C2 upper edge - Protects scanner during insertion/removal

Installation: Both TPU inserts snap-fit inside the C2 (bottom cradle section) - No adhesive needed, removable

Protection: TPU 85A cushioning protects scanner optics and housing - Anti-scratch, shock absorption, vibration damping

Durability: Flexible material resists tearing and fatigue - Maintains cushioning properties after repeated use

Scanner Protective Cover

Cradle Assembly Closure

Scanner Head Protection • Cradle Lock Mechanism • Dust & Debris Shield



Protective Cover
PETG or TPU • Cradle lock

Technical Specifications

| | | | |
|----------------------------------|------------------------|---------------------------------|------------|
| Material Options: | PETG or TPU 85A | Print Temperature (TPU): | 220°C |
| Primary Recommendation: | PETG (rigid structure) | Bed Temperature (TPU): | 40°C |
| Print Temperature (PETG): | 230-240°C | Infill Density: | 35% gyroid |
| Bed Temperature (PETG): | 80°C | Layer Height: | 0.2mm |

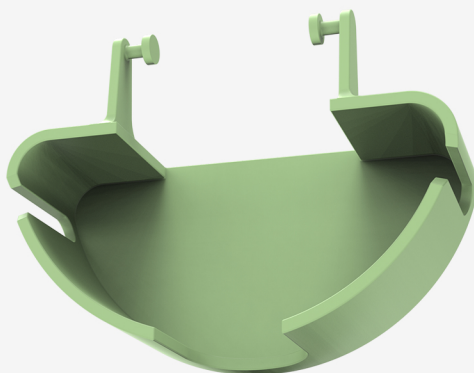
Features & Function

- Scanner Head Coverage: Fully encloses scanner optical head - Dust and debris protection
- Cradle Lock Mechanism: Snap-fit design connects C1 (upper) and C2 (lower) sections
- Integrated Handle: Handle tabs for easy on/off access - Ergonomic grip for quick removal
- Protection Layer: Acts as protective shell over entire scanner - Safeguards optics
- Storage Compatible: Can remain on cradle during storage - Environmental protection

Cable Management Holder

Scanner Cable Organization

Wall-Mount Cable Tray • Strain Relief • PETG Material



Cable Management Holder
PETG • Wall-mountable

Technical Specifications

| | | | |
|---------------------------|---------------|------------------------|------------------------------------|
| Material: | PETG filament | Cable Capacity: | 4-6mm diameter |
| Print Temperature: | 230-240°C | Features: | Dual posts + guide rollers |
| Bed Temperature: | 80°C | Purpose: | Cable organization & strain relief |
| Infill Density: | 40% gyroid | | |
| Layer Height: | 0.2mm | | |

Features & Function

- Cable Organization:** Holds scanner cable in organized coil - Prevents tangling and cable damage
- Strain Relief:** Curved tray design reduces cable stress - Protects cable insulation and connectors
- Wall Mounting:** Dual mounting posts - Compatible with existing wall systems and brackets
- Guide Rollers:** Top-mounted rollers guide cable smoothly - Reduces friction and cable wear
- Easy Access:** Cable can be quickly deployed or retracted - Convenient for daily clinic use

Mounting Plate

3D Scanner Holder

Wall-Mount Assembly Component • Professional Dental Equipment



Technical Specifications

| | | | |
|----------------------------------|--------------------------|----------------------------------|------------------|
| Material Options: | PLA+ or PETG filament | Print Temperature (PLA+): | 210-220°C |
| Print Temperature (PETG): | 230-240°C | Bed Temperature (PLA+): | 60°C |
| Bed Temperature (PETG): | 80°C | Layer Height: | 0.2mm (standard) |
| Infill Density: | 40% gyroid (recommended) | | |

Design Features

- 4x M4 keyhole slots for secure wall mounting (2 upper, 2 lower)
- Cable management port (Ø20mm) for scanner cable routing
- Built-in tray for cable organization and strain relief
- Accommodates standard dental 3D hand scanners (universal)
- Compatible with TRIOS, Medit, Shining 3D and similar brands
- Easy assembly - minimal hardware required

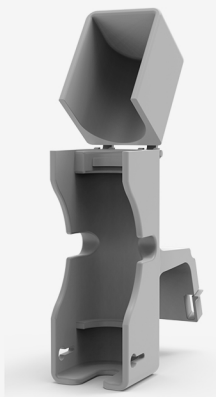
Scanner Cradle Assembly

3D Scanner Holder Main Body

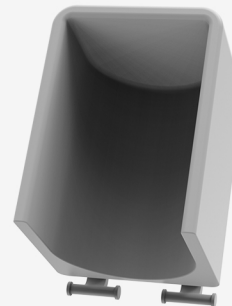
Two-Part Assembly (Upper & Lower Sections) • Professional Dental Equipment



Lower (C2)



Assembly (C)



Upper (C1)

Technical Specifications

Material: PETG filament

Print Temperature: 230-240°C

Bed Temperature: 80°C

Infill Density: 35% gyroid

Layer Height: 0.2mm

Cable Port: Ø20mm opening

Assembly: Snap-fit design

Assembly Components

C - Full Cradle Assembly: Main housing composed of upper (C1) and lower (C2) sections that snap together

C1 - Upper Section: Top portion with retaining rail (4mm snap-fit lip) - Captures scanner from above

C2 - Lower Section: Bottom portion with retaining rail (4mm snap-fit lip) - Captures scanner from below

Cable Port: Ø20mm opening at bottom for scanner cable entry and routing

Quick Assembly: No fasteners needed - parts snap-fit together for easy assembly and disassembly